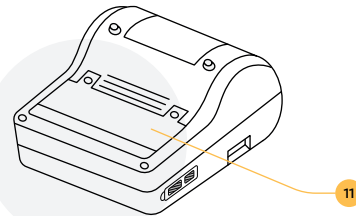
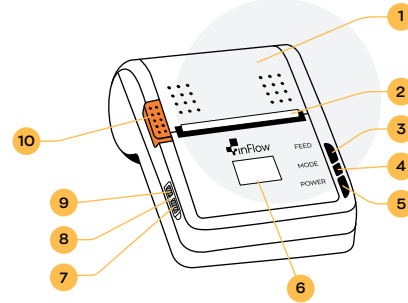
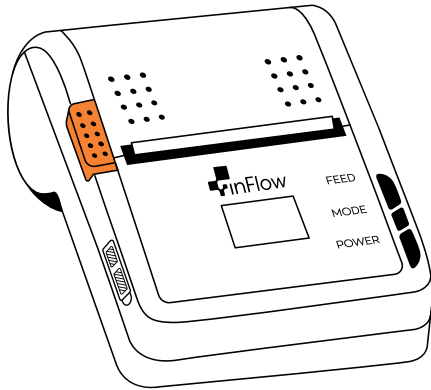


## Quick Guide

# inFlow Portable Printer



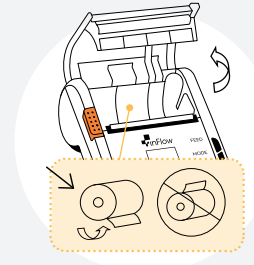
- |                      |                                   |
|----------------------|-----------------------------------|
| 1. Paper Cover       | 7. USB Charging and Communication |
| 2. Dust-proof Baffle | 8. Rubber Plug                    |
| 3. Feed Button       | 9. Reset Switch                   |
| 4. Mode Button       | 10. Cover Release                 |
| 5. Power Button      | 11. Battery Cover                 |

## Initial setup



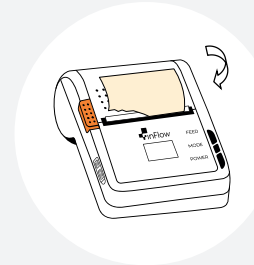
1

**Press the [Cover Release] to open the paper cover.**



2

**Place a paper roll into the printer.**  
Make sure to orient it so the paper rolls out from the bottom.



3

**Close the cover. Then press and hold the [Feed Button] until printer starts to feed the paper.**  
When the paper stops feeding, tear off the excess paper.

**To download the latest printer driver, please visit:**

[www.inflowinventory.com/download](http://www.inflowinventory.com/download)

### Performance specifications

<b>Printing method</b> Line thermal printing	<b>Paper thickness</b> 60–85µm
<b>Media width</b> 20–80mm	<b>Print control instructions</b> ESC/POS, CPCL, CPL, TSPL
<b>Max printing width</b> 72mm	
<b>Resolution</b> 11.8 dots/mm (300dpi)	<b>Connectivity</b> Wi-Fi 2.4 GHz & 5 GHz USB Type-C
<b>Printing speed</b> Up to 90mm/S	

### Physical specifications

<b>Dimensions</b> 116 L x 104 W x 57mm H	<b>Power supply mode</b> 7.4 V/2600mAh rechargeable Lithium-ion battery
<b>Weight</b> 310g (without paper)	
<b>Paper roll diameter</b> ≤ 50mm	

### Safe operating ranges

<b>Operating temperature</b> 0–50°C	<b>Storage temperature</b> -10°–60°C
<b>Operating humidity</b> 10–80%	<b>Storage humidity</b> 10–95%

### Basic functions

#### How to turn the printer on

**Press and hold the [Power Button]** until you see the LCD screen light up and you hear a boot-up tone.

#### How to shut the printer off

**While the printer is on**, press and hold the [Power Button] until you hear a shutdown tone.

You can release the [Power Button] when the LCD screen turns off.

### How to read the printer icons

You'll see up to four icons across the top of the printer's LCD screen. Here's what they mean (from left to right):

1. The Wi-Fi icon shows up when connected to a wireless network, or shows an exclamation (!) when disconnected.
2. The USB icon shows when connected via USB cable.
3. The plug icon shows when the printer is charging.
4. The battery icon has four sections to indicate the battery level.

### How to feed paper into the printer

**While the printer is on**, press and hold the [Feed Button] until the printer starts to feed the paper.

Release the button when you reach a gap between labels.

### How to run a test print

**While the printer is shut off**, press and hold the [Feed Key] first, and then press and hold the [Power Button] until you hear a boot-up tone.

After you hear the boot-up tone release both keys and the printer will print a quick test.

### Archon Systems Inc.

260 Carlaw Ave. Unit 209,  
Toronto, Canada, M4M 3L1  
info@archonsystems.com  
1-866-923-4974